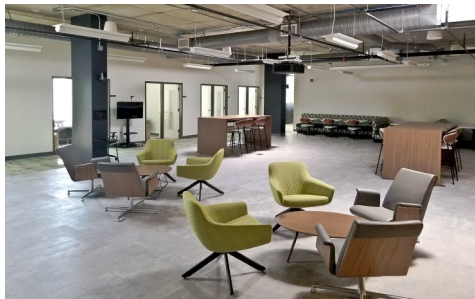


3150 & 3160 MAIN STREET DULUTH—DOWNTOWN

\$25.75



Property Highlights

- True live/work/play environment
- Restaurants, retail, and residences within walking distance
- Up to 18,624 SF available
- Divisible to:
 - B 6,124 SF
 - BD 7,705 SF
 - C 10,919 SF
 - D 12,500 SF
- Furniture available for use
- Available now
- Term through 10-31-2028
- \$25.75psf / Full Service

770-723-1900

[Click for Floor Plan](#)

[Click for Location](#)